

BELZONA TACKLES PROBLEM WITH MUD FILTER

CUSTOMER

Sugar Cane Mill in Australia

APPLICATION DATE

1997

APPLICATION SITUATION

Faceplate of rotary valve on mud filter

PROBLEM

Corrosion on the faceplate of the rotary valve.

PRODUCTS

Belzona® 1311 (Ceramic R- Metal)

Belzona® 1321 (Ceramic S-Metal)

SUBSTRATE

Cast Iron

APPLICATION METHOD

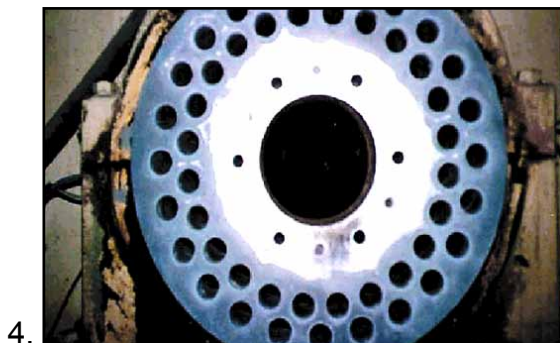
The application was carried out in accordance with a modified version of Belzona Know-How System Leaflet VPF-1.

BELZONA FACTS

Conventional repairs would have both been costly and time consuming.

PICTURES

1. Mud filter.
2. Corroded faceplate of rotary valve
3. Forming technique being used to apply Belzona Ceramic Metal System
4. Completed application.



For more examples of *Belzona Know-How In Action*, please visit <http://khia.belzona.com>



ISO 9001:2008
Q 09335
ISO 14001:2004
EMS 509612

Belzona products are
manufactured under an ISO
9000 Registered Quality
Management System.

UK • USA • Canada • China
www.belzona.com


BELZONA®
Repair • Protect • Improve